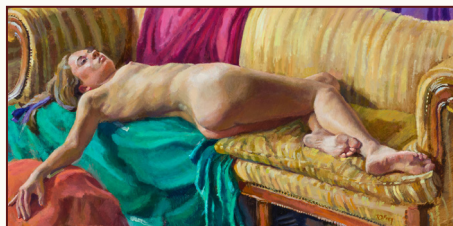


## STUDIO INCAMMINATI CLASSES AT LYCEUM HALL



### Oil Painting: Still Life with the Figure

Robin Frey

Mondays, 6–9 p.m.

January 30–April 2 (10 weeks)

\$425

By combining the study of still life and the figure, students practice the rhythm of balancing and maintaining volume, color and light throughout the many stages of a painting. The class

goal is to understand the importance of a moving and meaningful composition while tackling the continuous task of improving drawing, edges and color. Students of all levels are encouraged to register. Beginners work in charcoal before embarking on the study of color.

*Studio Incamminati instructor Robin Dawn Frey received the 2008 Portrait Society of America Award of Honor. Her work has been displayed at numerous shows and in private collections.*



### Alla Prima Still Life Painting

Peter Kelsey

Tuesdays, 10 a.m.–1 p.m.

January 31–April 3 (10 weeks)

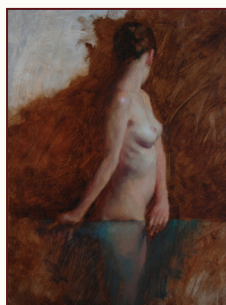
\$399

Alla Prima, also called “direct painting,” translates from the Italian as “at first go.” Characterized by expressive, painterly brushwork, Alla Prima paintings are completed wet-in-wet in one session.

This class covers skills and principles of Alla Prima painting as they relate to still life and is taught

through demonstrations, lectures and individual critiques. Concepts covered include drawing accurately, form, color and value relationships, edges and paint handling. The goal is for students to have a strong understanding of the painting process and the ability to produce a painting with speed, accuracy and economy. All levels of artist are welcome.

*Studio Incamminati instructor Peter Kelsey’s artwork was juried into the prestigious 2011 Laumeister Fine Art Competition at the Bennington (VT) Center for the Arts. He works with the public at Studio Incamminati’s popular Sunday Open Studio sessions.*



### Form Painting with the Figure

Stephen Early

Thursdays, 6–9 p.m.

February 2–April 5 (10 weeks)

\$425

Learn the principles essential to transform abstract flat shapes into fully dimensional forms and create a sense of light on the figure. Students concentrate on painting the figure with a full range of values and developing the ability to make accurate value calibrations. The focus is on structure, anatomy, proportion, light direction, edge conditions, abstract movements through

the figure, composition and an understanding of form on the figure. These concepts are executed through an application of opaque and semi-opaque paint in the light and shadow areas. This also enables the student to develop painting skills such as scumbling, feathering, and texture. Control of the paint is a priority and is essential to achieving required goals.

*Studio Incamminati instructor Stephen Early received a Certificate of Excellence in the Portrait Society of America’s 2008 and 2010 Portrait Competitions.*

**Classes are at Lyceum Hall ♦ 432 High Street, Burlington NJ, 08016**

For details visit [www.StudioIncamminati.org/lyceum](http://www.StudioIncamminati.org/lyceum)

Register with Visa, MasterCard, AmEx or Discover by calling Studio Incamminati at 215-592-7910

Studio Incamminati is recognized as a nonprofit organization under Chapter 501(c) (3) of the Internal Revenue Code. Official registration and financial information may be obtained from the PA Department of State by calling toll free, within PA 1.800.732.0999. Registration does not imply endorsement.